

These are the notes referred to on the following official copy

The electronic official copy of the title plan follows this message.

Please note that this is the only official copy we will issue. We will not issue a paper official copy.

This official copy was delivered electronically and when printed will not be to scale. You can obtain a paper official copy by ordering one from HM Land Registry.

This official copy is issued on 29 July 2022 shows the state of this title plan on 29 July 2022 at 13:42:26. It is admissible in evidence to the same extent as the original (s.67 Land Registration Act 2002). This title plan shows the general position, not the exact line, of the boundaries. It may be subject to distortions in scale. Measurements scaled from this plan may not match measurements between the same points on the ground. This title is dealt with by the HM Land Registry, Nottingham Office .

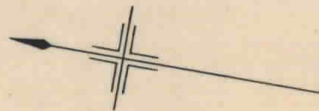
© Crown copyright. Produced by HM Land Registry. Reproduction in whole or in part is prohibited without the prior written permission of Ordnance Survey. Licence Number 100026316.

H. M. LAND REGISTRY

NATIONAL GRID PLAN TR 3764 SECTION A
(KENT)

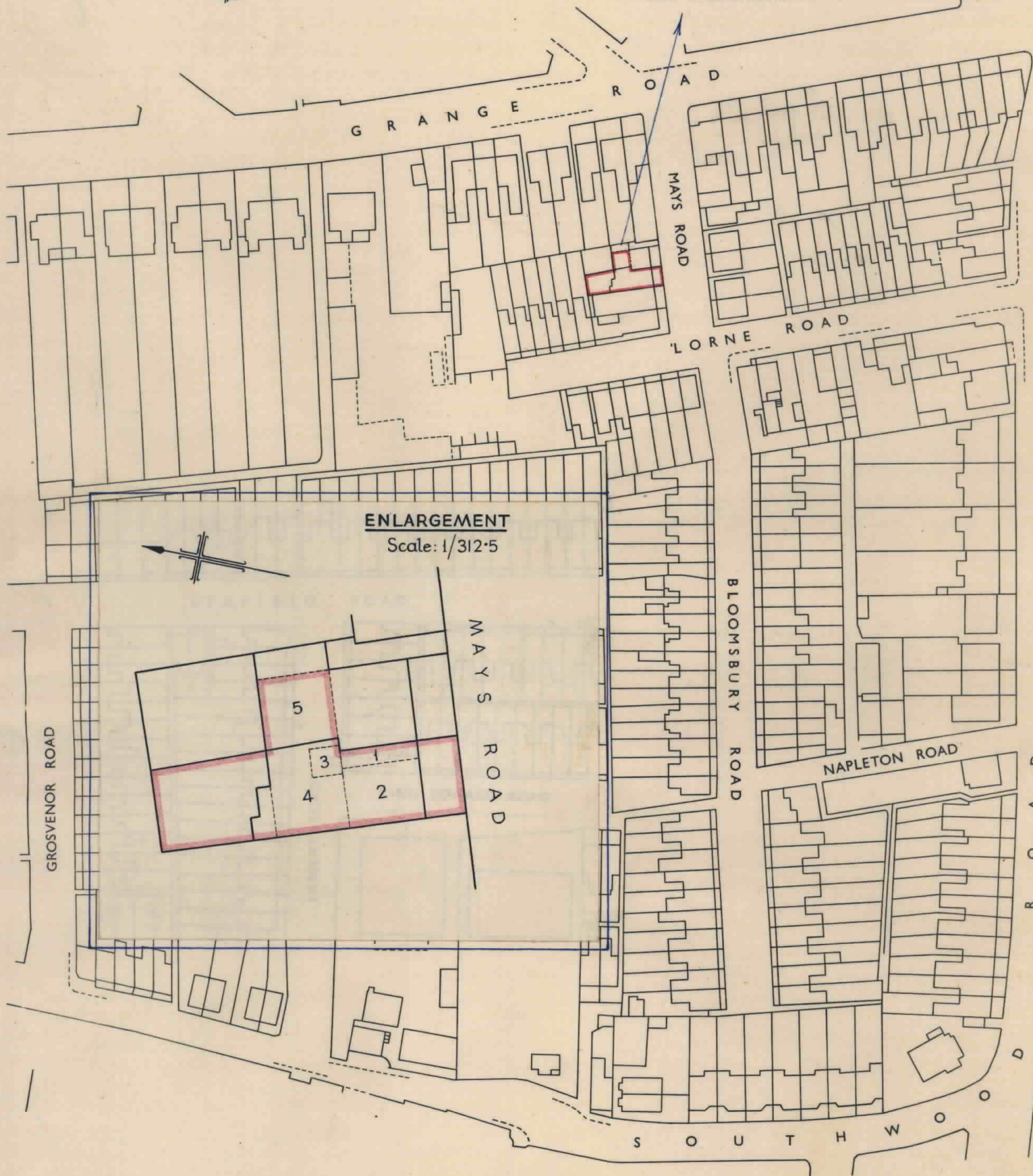
Scale 1/1250

RAMSGATE PARISH



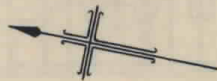
TR3765 SW
TR3764 NW

SEE ENLARGEMENT



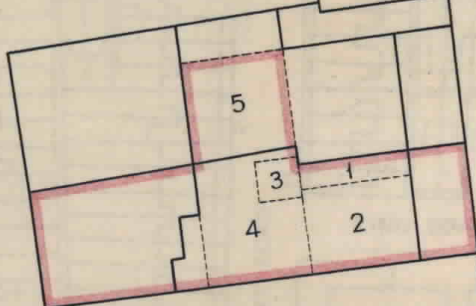
ENLARGEMENT

Scale: 1/312.5



GROSVENOR ROAD

MAYS ROAD



Crown Copyright Reserved



Filed Plan of Title No. **K 59667**