

These are the notes referred to on the following official copy

The electronic official copy of the title plan follows this message.

Please note that this is the only official copy we will issue. We will not issue a paper official copy.

This official copy was delivered electronically and when printed will not be to scale. You can obtain a paper official copy by ordering one from HM Land Registry.

This official copy is issued on 12 May 2022 shows the state of this title plan on 12 May 2022 at 11:21:09. It is admissible in evidence to the same extent as the original (s.67 Land Registration Act 2002). This title plan shows the general position, not the exact line, of the boundaries. It may be subject to distortions in scale. Measurements scaled from this plan may not match measurements between the same points on the ground. This title is dealt with by the HM Land Registry, Nottingham Office .

© Crown copyright. Produced by HM Land Registry. Reproduction in whole or in part is prohibited without the prior written permission of Ordnance Survey. Licence Number 100026316.

H. M. LAND REGISTRY

NATIONAL GRID PLAN TR 3069

SECTION L

(KENT)

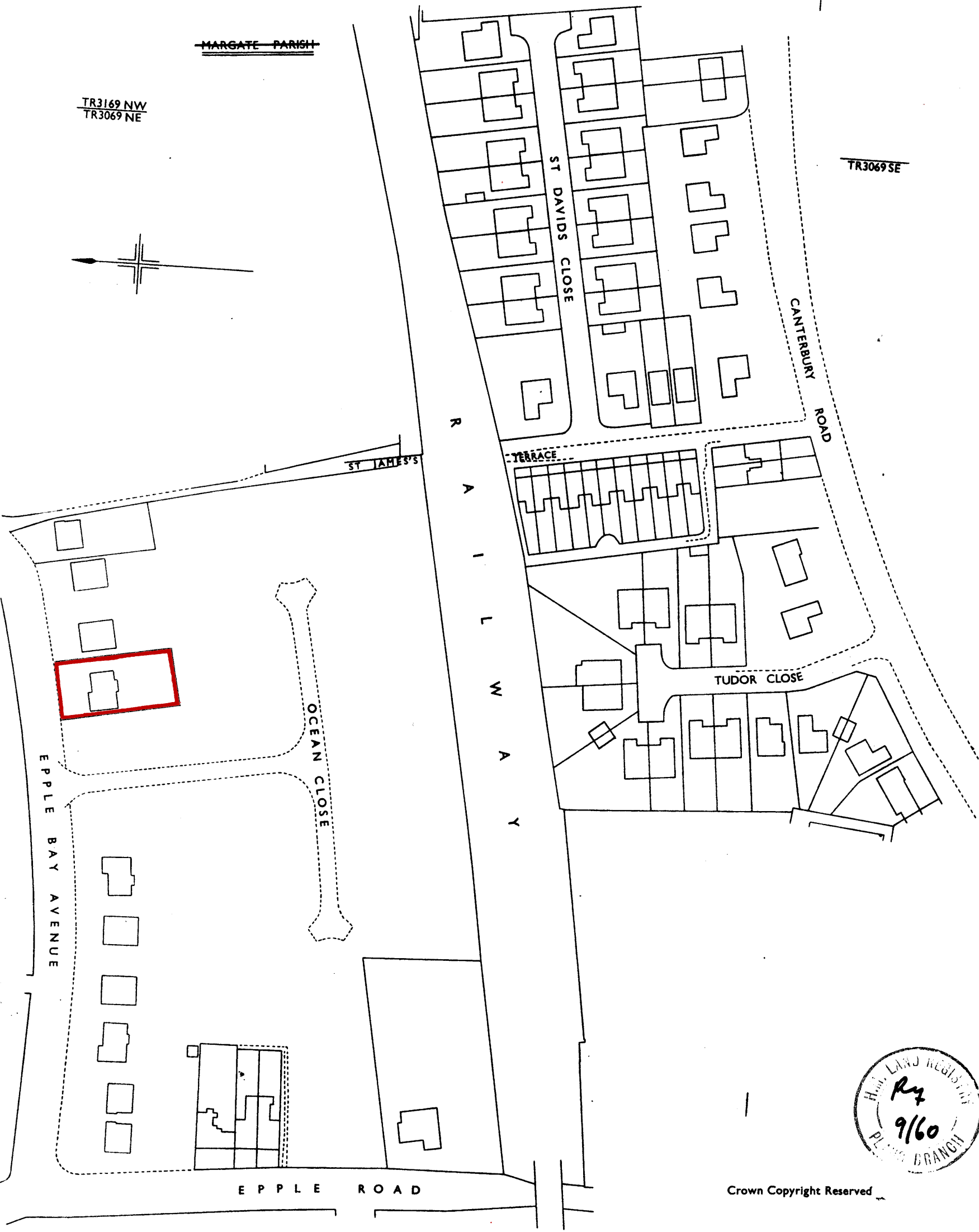
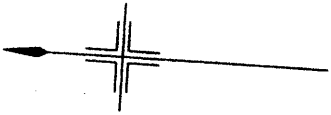
Scale 1/1250

THAMES DISTRICT

~~MARGATE PARISH~~

TR3169 NW
TR3069 NE

TR3069 SE



Crown Copyright Reserved

Filed Plan of Title No. **K 107008**